

NO CHALLENGE TOO TOUGH

**BOOM ARTICULATION
-20 TO 80°**

OPTIMIZED AT
-20 TO 20°
DIGGING ANGLES

900 DIGGER DERRICK

UP TO
42,000 LB.

A WHOLE LOT OF MUSCLES

Once again, Posi+ goes beyond industry standards and presents a new generation of Digger Derricks. Completely reinvented to meet the high Posi+ design and quality standards.

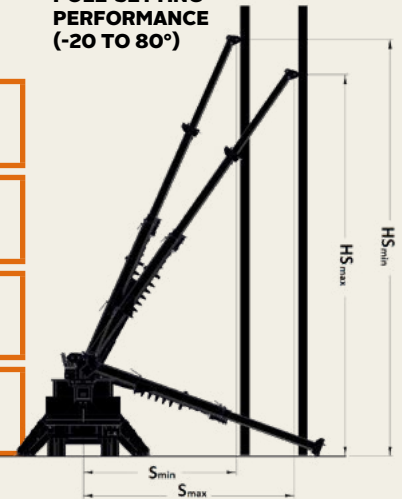
- + STRENGTH**
- + SECURITY**
- + SAVINGS**

	MAX. CAPACITY	CAP. AT 10 FT. RADIUS	SHEAVE HEIGHT			LOAD RADIUS			HORIZONTAL REACH			DIGGING RADIUS	
			A1	A2	A3	R1	R2	R3	B1	B2	B3	S1	S2
900-48 BOOM TIP WINCH	41,700 lb. 18,915 kg	16,800 lb. 7,620 kg	31.7 ft. 9.7 m	40.6 ft. 12.4 m	49.4 ft. 15.1 m	3.8 ft. 1.2 m	5.3 ft. 1.6 m	6.9 ft. 2.1 m	21.1 ft. 6.4 m	30.1 ft. 9.2 m	39.1 ft. 11.9 m	18.7 ft. 5.7 m	27.7 ft. 8.4 m
900-50 BOOM TIP WINCH	41,700 lb. 18,915 kg	16,800 lb. 7,620 kg	31.7 ft. 9.7 m	41.5 ft. 12.6 m	51.4 ft. 15.7 m	3.8 ft. 1.2 m	5.5 ft. 1.7 m	7.3 ft. 2.2 m	21.1 ft. 6.4 m	31.1 ft. 9.5 m	41.1 ft. 12.5 m	18.7 ft. 5.7 m	28.7 ft. 8.7 m
900-52 BOOM TIP WINCH	41,700 lb. 18,915 kg	16,800 lb. 7,620 kg	31.7 ft. 9.7 m	42.5 ft. 13.0 m	53.3 ft. 16.2 m	3.8 ft. 1.2 m	5.7 ft. 1.7 m	7.6 ft. 2.3 m	21.1 ft. 6.4 m	32.1 ft. 9.8 m	43.1 ft. 13.1 m	18.7 ft. 5.7 m	29.7 ft. 9.1 m
900-55 BOOM TIP WINCH	35,900 lb. 16,284 kg	15,800 lb. 7,167 kg	34.6 ft. 10.5 m	45.5 ft. 13.9 m	56.3 ft. 17.2 m	4.3 ft. 1.3 m	6.3 ft. 1.9 m	8.2 ft. 2.5 m	24.1 ft. 7.3 m	35.1 ft. 10.7 m	46.1 ft. 14.1 m	21.7 ft. 6.6 m	32.7 ft. 10.0 m

✓ Patented climate control system No US 9,403,434 B2 | Patented securable pole tilt No US 9,267,307 B2 | Patented spider outriggers No US 8,944,466 B2

	MINIMUM RADIUS (S _{MIN})	MAX. RADIUS (S _{MAX})	CAPACITY AT MINIMUM RADIUS (S _{MIN}) -20° TO MAX HEIGHT	CAPACITY AT MAXIMUM RADIUS (S _{MAX}) -20° TO MAX HEIGHT	SHEAVE HEIGHT AT MINIMUM RADIUS (H _{S_{MIN}})	SHEAVE HEIGHT AT MAXIMUM RADIUS (H _{S_{MIN}})
900-48 BOOM TIP WINCH	18.7 ft. 5.7 m	27.2 ft. 8.3 m	6,800 lb. 3,084 kg	4,500 lb. 2,041 kg	45.0 ft. 13.7 m	38.7 ft. 11.8 m
900-50 BOOM TIP WINCH	18.7 ft. 5.7 m	28.1 ft. 8.6 m	6,400 lb. 2,903 kg	4,050 lb. 1,837 kg	47.2 ft. 14.4 m	40.6 ft. 12.4 m
900-52 BOOM TIP WINCH	18.7 ft. 5.7 m	29.0 ft. 8.8 m	6,150 lb. 2,790 kg	3,650 lb. 1,656 kg	49.5 ft. 15.1 m	42.5 ft. 13.0 m
900-55 BOOM TIP WINCH	21.7 ft. 6.6 m	32.0 ft. 9.8 m	5,200 lb. 2,359 kg	3,200 lb. 1,452 kg	51.3 ft. 15.6 m	43.8 ft. 13.4 m

DIGGING + POLE-SETTING PERFORMANCE (-20 TO 80°)



P-900-2018-03

STANDARD EQUIPMENT

- + 3-STAGE TELESCOPIC BOOM
- + FIBERGLASS UPPER BOOM
- + INSULATING PER ANSI "46 KV AND BELOW"
- + CONTINUOUS ROTATION
- + PLANETARY ROTATION REDUCER
- + BOOM OUTRIGGERS INTERLOCK SYSTEM
- + REAR TAILSHELF CONTROL PANEL
- + FULL PRESSURE OPEN CENTER HYDRAULIC CONTROLS
- + 50-GALLON OIL RESERVOIR
- + SUCTION, RETURN AND HIGH PRESSURE OIL FILTERS
- + BOOM STOW PROTECTION
- + MEETS OR EXCEEDS ANSI A10.31

The information and specifications contained in this document are for indication purposes only; as such they may vary over the time.

*Patent No US 9,267,307 B2 | **Patent No US 8,944,466 B2

OPTIONS AVAILABLE

- + DIGGER DRIVE 2-SPEED "SHIFT ON THE FLY"
- + TRANSFERABLE POLE FLANGE
- + POLE GUIDE WITH SECURABLE POLE TILT*
- + HOSE REEL
- + TOOL OUTLETS
- + VARIOUS AUGERS AND EXTENSION SHAFT
- + POLE PULLER, TAMPER
- + REMOVABLE WORK PLATFORM
- + RADIO REMOTE CONTROLS
- + DYNAMIC LOADING INDICATOR (WITH OVERLOAD PROTECTION)
- + ACTIVE STABILITY CONTROL
- + RIDING SEAT AND CONTROLS
- + CORNER MOUNT
- + WIDE VARIETY OF OUTRIGGERS, INCLUDING A-FRAME OUTRIGGERS AND SPIDER OUTRIGGERS**
- + WINCH AT TURRET
- + WINCH AT BOOM TIP
- + EMERGENCY PUMP
- + UPPER JIB
- + CAPSTAN DRIVE
- + FOOT PEDAL CONTROL



10 Artisan Street, Victoriaville QC G6P 7E4, CANADA
1 800-758-5717 | sales@posiplus.com

POSIPUS.COM